

## Silo Hawk Lite

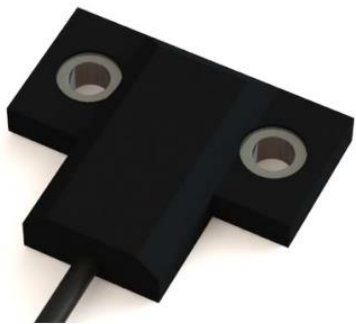


Silo Hawk Lite functions as a measurement solution for silos and loads, utilizing bolt-on strain sensors for precise calculation of load weight with an accuracy of 5-10% within the full-scale range. The collected data is conveniently showcased on a Panel Meter and is adaptable for various load applications, including vehicles.

### 2-Hole Bolt-On Sensor

The standard 2-Hole sensor can be bolted directly to the structure for use in a range of applications and environments. We recommend that the structure, to which sensor is to be bolted, should be at least 10 times larger than the sensor, to ensure accurate and reliable measurement data.

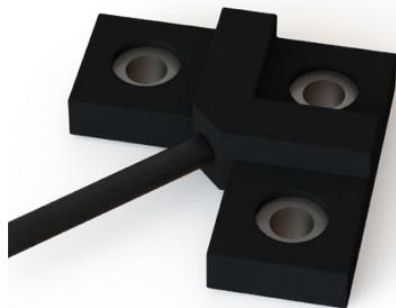
The 2-Hole sensor has a standard hole size of 10.2mm for 2xM10 cap head screws.



### 3-Hole Bolt-On Sensor

The 3-Hole bolt-on strain sensor is a dual element sensor that corrects any differential temperature between the sensor and the structure. For example, a vehicle axle can be 5 degrees hotter than the sensor, as the axle heats due to braking and drive loads. In this case the surface strain of the axle due to temperature can be 60 micro-strain greater than the sensor. The 3-Hole bolt-on sensor has been designed to eliminate this potential strain difference.

The 3-Hole sensor has a standard hole size of 8.2mm for 3xM8 cap head screws.



## Silo Hawk

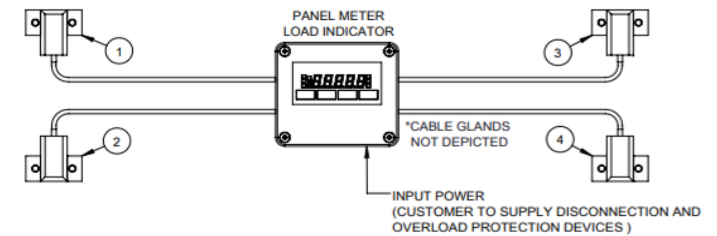
- Single Silo Installation
- INT4L Panel Meter (c/w wall box)
- Series 460 mV/V Sensors
- Mounting Blocks & Fixings
- Weld fixing jig



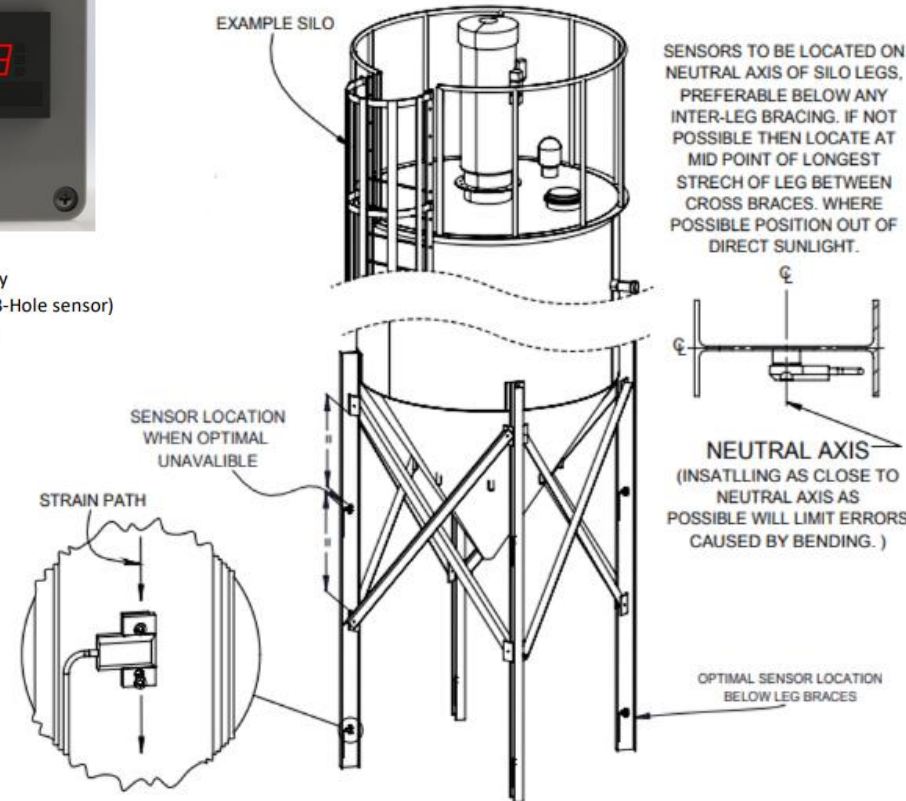
### Options:

- Large Digit Display
- Temperature Compensation (3-Hole sensor)
- 4-20mA Output
- RS485 Output
- Alarm Outputs

TYPICAL SILO HAWK LITE SETUP  
(IT IS STRONGLY RECOMMENDED THAT SYSTEMS ARE SET UP AND BENCH TESTED PRIOR TO SILO INSTALLATION)



### SENSOR POSITIONING



Contact our technical sales team or sales team to discuss:

web@datum-electronics.co.uk / +44(0)1983 282834

**datum-electronics.co.uk**

**MADE IN  
BRITAIN**