

Linear Potentiometer Spring Return

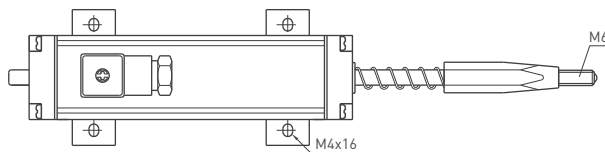
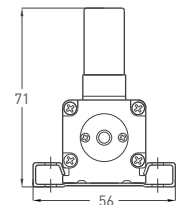
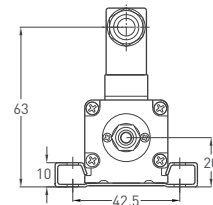
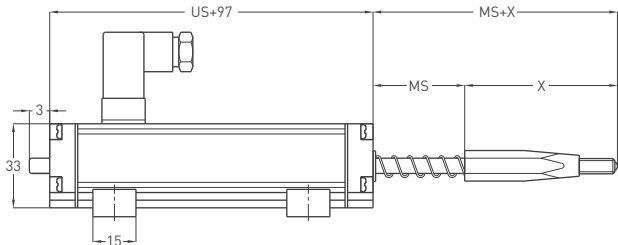
- Measuring range 30 - 150 mm
- $\pm 0.1\%$ linearity
- 100 million movements life
- < 0.01 mm repeatability
- Infinite resolution



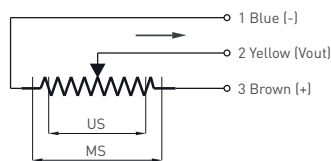
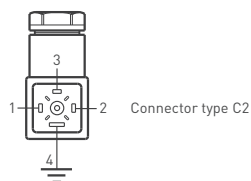
Technical Specifications

Measurement stroke	30 - 150 mm
Linearity	$\pm 0.1\%$ (150-200 mm), $\pm 0.2\%$ (75-129 mm), $\pm 0.5\%$ (< 75 mm)
Repeatability	< 0.01 mm
Resolution	Infinite
Resistance	5 kOhm : 30 - 150 mm
Resistance tolerance	$\pm 20\%$
Load resistance	100 kOhm min.
Recommended wiper current	$< 1 \mu A$
Permissible applied voltage	28 VDC max.
Electrical connections	4 pin hydraulic type connector
Displacement speed	< 5 m/s
Mechanical life	100 million movement
Case diameter	33 mm x 33 mm
Case material	Anodized aluminium
Rod material	Stainless steel
Rod diameter	$\varnothing 6$ mm
Mechanical fixing	Variable brackets
Protection level	IP 54
Operating temperature	$-20^{\circ}C \dots +80^{\circ}C$
Storage temperature	$-30^{\circ}C \dots +90^{\circ}C$

Mechanical Specifications



	LPS 30	LPS 50	LPS 75	LPS 100	LPS 150
X	63 mm	68 mm	78 mm	88 mm	108 mm



RTM (mm)	30	50	75	100	125	150
US (Usefull stroke)	30	50	75	100	125	150
MS (Mechanical stroke)	34	54	79	104	129	154
L (Total length)	227	272	332	392	452	512

Ordering Procedure

Model	Measurement stroke (mm)	Linearity (%)	Resistance (kOhm)	Connector
LPS	100	D	5K	C2
LPS	30 - 150 mm	A : $\pm 0.5\%$ (< 75 mm), B : $\pm 0.2\%$ (75-129 mm), C : $\pm 0.1\%$ (150-200 mm)	5 kOhm : 30 - 150 mm	C2 : 4 pin connector

Above given technical data are only for information purpose. OPKON has right to change product specifications without notice.